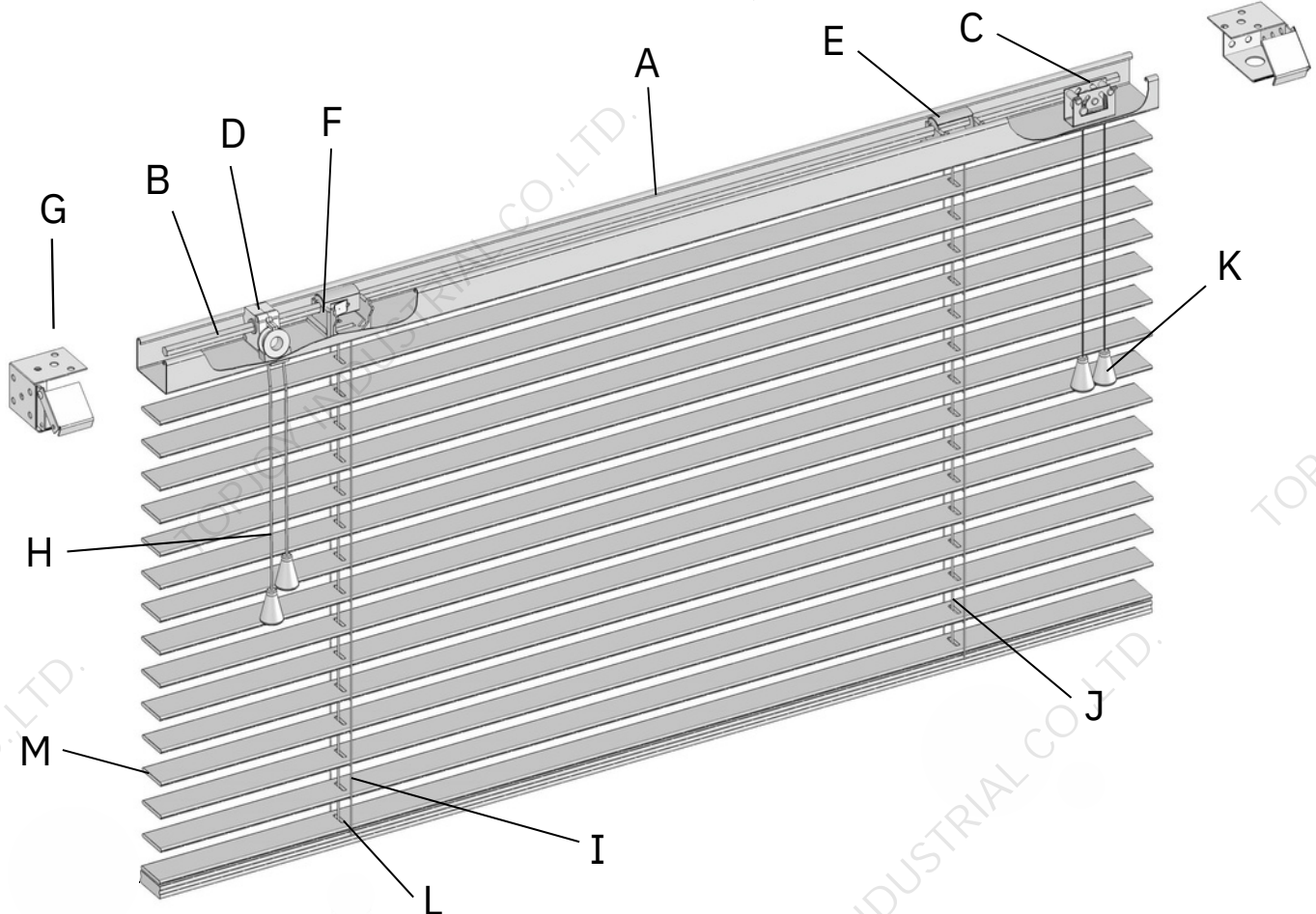


# Cordless 2" Faux Wood Blinds Instructions

**Note: It is best to read through the installation instruction completely prior to beginning your installation.**

## CORDED 2" FAUX WOOD BLINDS PARTS

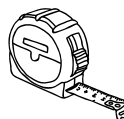


- |                           |                     |
|---------------------------|---------------------|
| A - Headrail              | H - Tilting Cord    |
| B - Pinion Rod (Tilt Rod) | I - Cord Ladder     |
| C - Cord Lock             | J - Lift Cord 1.4mm |
| D - Cord Tilter           | K - Cord Tassels    |
| E - Tape Drum             | L - Bottomrail      |
| F - Tape Drum Support     | M - 2" Slats        |
| G - Installation Bracket  |                     |

## TOOLS THAT YOU WILL NEED



Cordless Drill



Tape Measure



Pencil

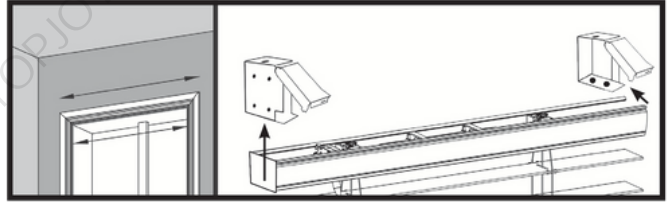


Step stool or ladder

# INSTALLATION STEPS

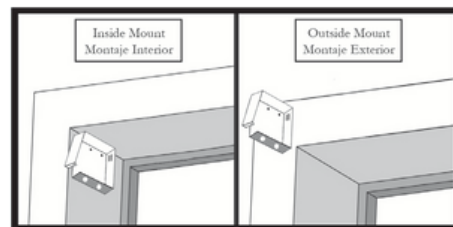
## 1. DETERMINE BLIND POSITION

Mark the bracket positions depending on if you ordered inside or outside mount



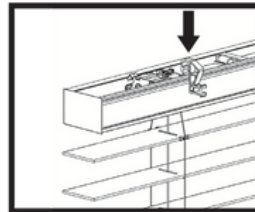
## 2. INSTALL MOUNTING BRACKETS

Install mounting brackets using screws included in component package.



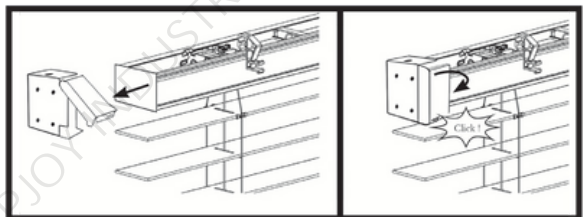
## 3. ATTACH VALANCE CLIPS

Attach valance clips to headrail.



## 4. MOUNT YOUR BLIND

Mount your blind by inserting the headrail ends into the open mounting brackets.



## ENJOY YOUR NEW WINDOW TREATMENTS

Still need help? TOPJOY is here to guide you through the entire process and answer any questions you may have during installation! Chat with us live or watch our quick tutorial video to see how it 's done.



86-18321907503



[www.topjoyblinds.com](http://www.topjoyblinds.com)



Email: [info@topjoyblinds.com](mailto:info@topjoyblinds.com)